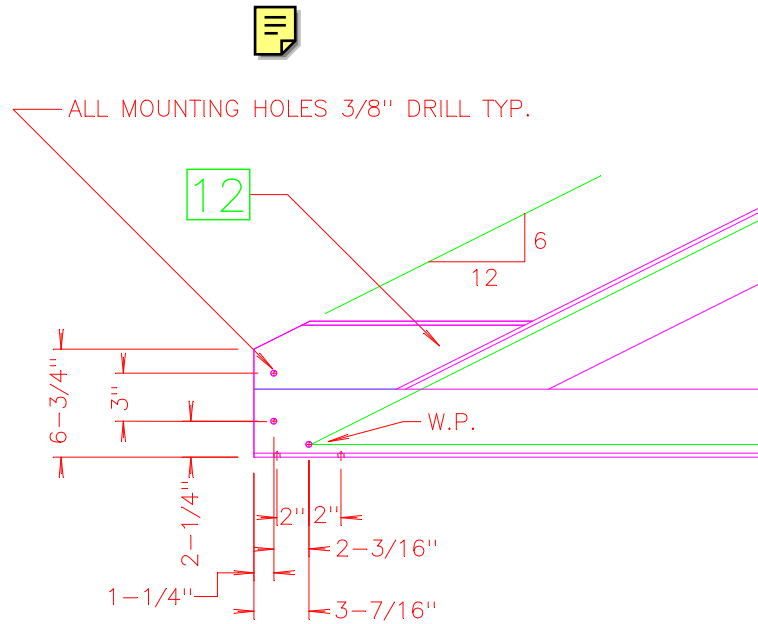


BID NOTES:

1. ALL WELDS ARE DONE WITH 7018 S.M.A.W.
2. REMOVE ALL SHARP BURS AND EDGES
3. L 3x3x1/4 PERLIN IS NOT A BID ITEM
4. PRIME AND PAINT WITH RUST COLOR
5. BID MUST INCLUDE DELIVERY TO THE BUILDING SITE:
1313 COLLEGE AVENUE
CANON CITY, CO 81212
6. ADDITIONAL INFORMATION AVAILABLE FROM OUR SYSTEMS ENGINEER AT 719-276-5935
7. WE ARE REQUESTING YOU PROVIDE PRICING FOR 12 TRUSSES.

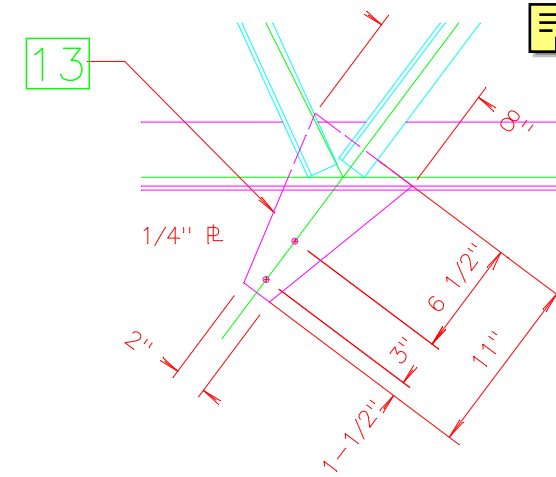
CUTTING SCHEDULE

ITEM	MATERIAL FOR 12 TRUSSES	REQ'D
①	WT 4 x 9.2# x 30'-6-7/8	12
②	WT 4 x 9.2# x 16'-5-1/2	24
③	L2 x 1-1/2 x 1/4 x 7'-2-1/4	12
④	L2 x 1-1/2 x 1/4 x 9'-1	48
⑤	L2 x 1-1/2 x 1/4 x 4'-1-1/2	48
⑥	L2 x 1-1/2 x 1/4 x 4'-5	48
⑦	L2 x 1-1/2 x 1/4 x 4'-3-1/2	48
⑧	L2 x 1-1/2 x 1/4 x 2'-0	48
⑨	L2 x 1-1/2 x 1/4 x 1'-11	48
⑩	PL 1/4 x 3-1/2 x 1'2	12
⑪	PL 1/4 x 6 x 9	24
⑫	WT 4 x 9.2# x 13	24
⑬	PL 1/4 x 8 x 11	24



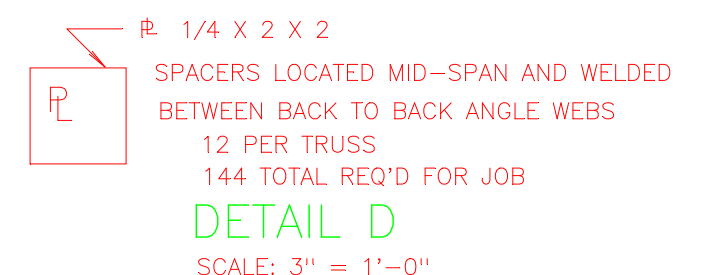
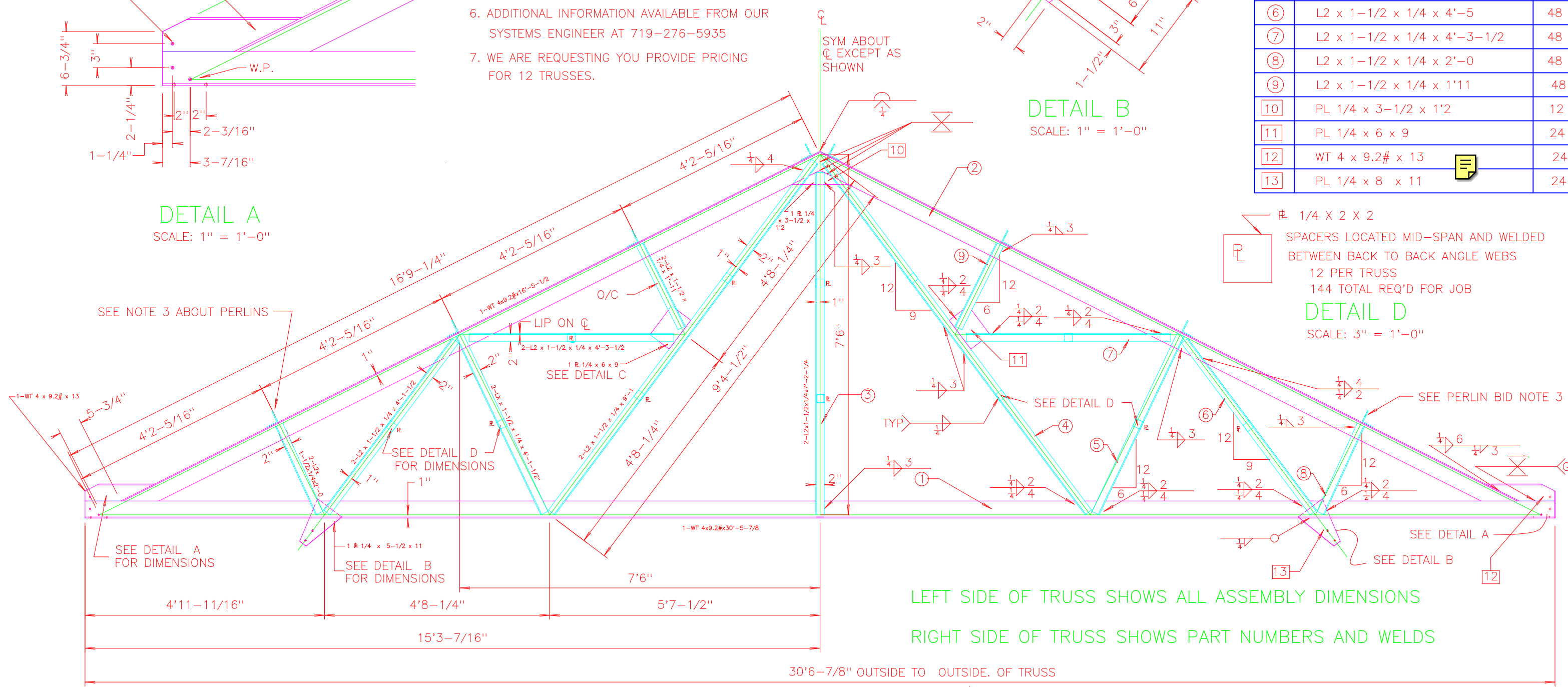
DETAIL A

SCALE: 1" = 1'-0"



DETAIL B

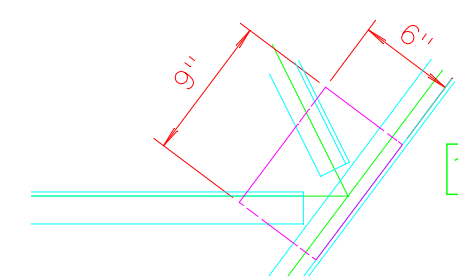
SCALE: 1" = 1'-0"



DETAIL D

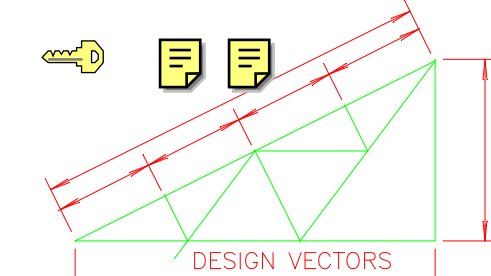
SCALE: 3" = 1'-0"

LEFT SIDE OF TRUSS SHOWS ALL ASSEMBLY DIMENSIONS
RIGHT SIDE OF TRUSS SHOWS PART NUMBERS AND WELDS



DETAIL C

SCALE: 1" = 1'-0"



BASIC DESIGN DATA:
SPAN = 30'-0"
HALF SPAN = 15'-0"
RISE = 7'-6"
SLOPE = 16'-9 1/4" @ 6/12
SLOPE / 4 = 4'-2 5/16" @ 6/12

CANON CITY DESIGN
CANON CITY, CO 81212

TITLE: 30' TRUSS BID REQUEST

DESIGNER: MLG	SHEET
DATE	SCALE: 1/2" = 1'-0"

1 of 2